

AirportWatch

Enhanced flight awareness





Airport**Watch** is a real-time tracking tool designed for airports that require precise aircraft monitoring using the ADS-B network. It offers a fully customizable platform to enhance situational awareness at your airport.

Airport**Watch** utilizes the highly secure and low latency network of **ADSB SUPPORT** using high quality hardware to guarantee reliability, accuracy and integrity of the displayed data.

Customize Airport**Watch** interface using various map types such as topographical or minimalistic maps to increase focus on the aircraft in your airspace.

Enable data overlays to show gate numbers, ATS airspace boundaries, navigation aids among other AIP features.

Key features

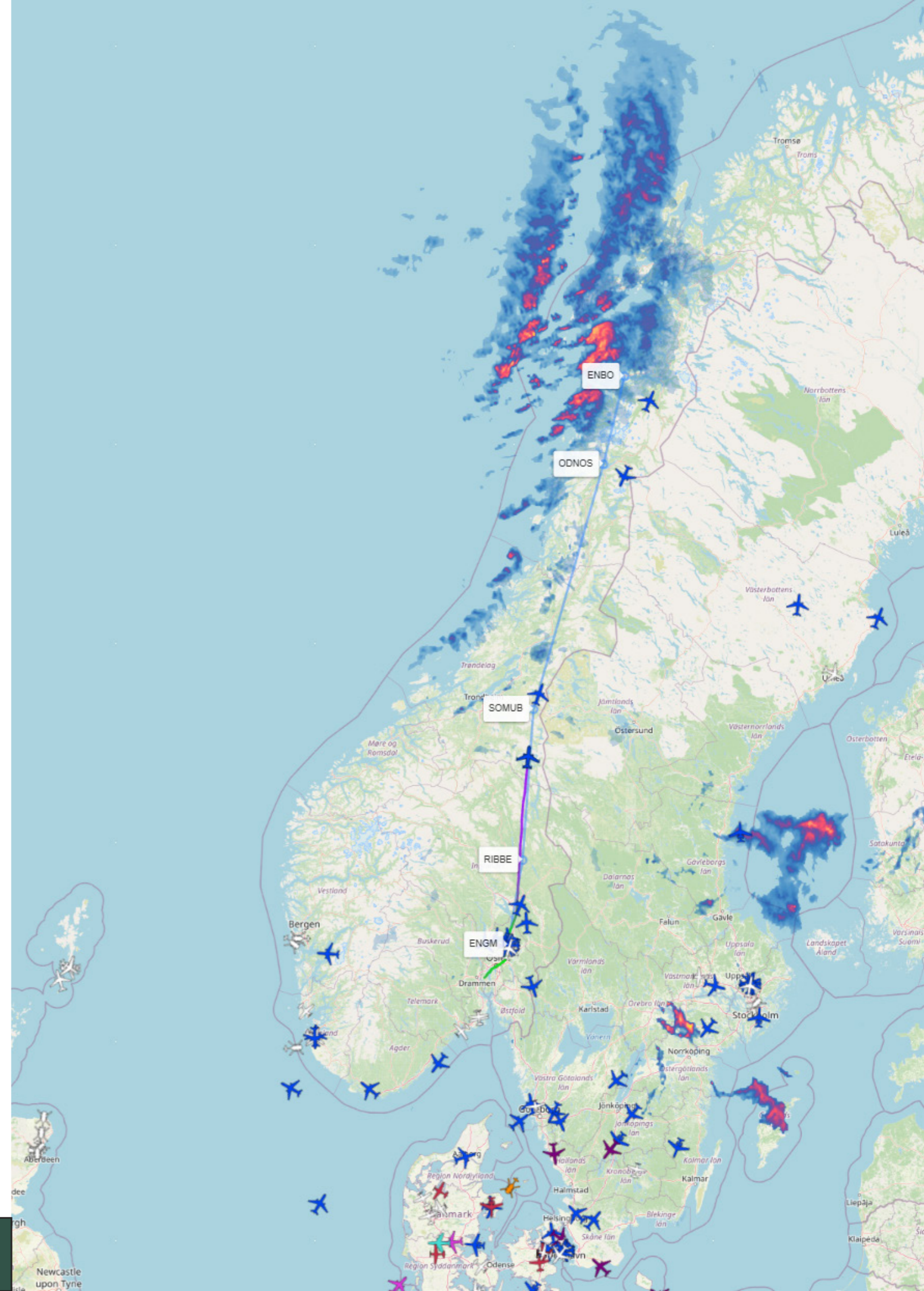
- Gate-to-Gate precision tracking
- Display filed flightplans on map
- Visualization of actual flight paths
- Alerts when aircrafts enter your airspace
- Live precipitation overlay on map

Flight list filters:

- Departures
- Arrivals
- Callsigns or company designators
- Flight routes
- Hexcodes

Custom aircraft labels include:

- Callsign
- Hexcode
- Altitude
- Vertical speed
- Groundspeed
- Track
- Squawkcode





Flightlist

Search for flights

Show selected flights

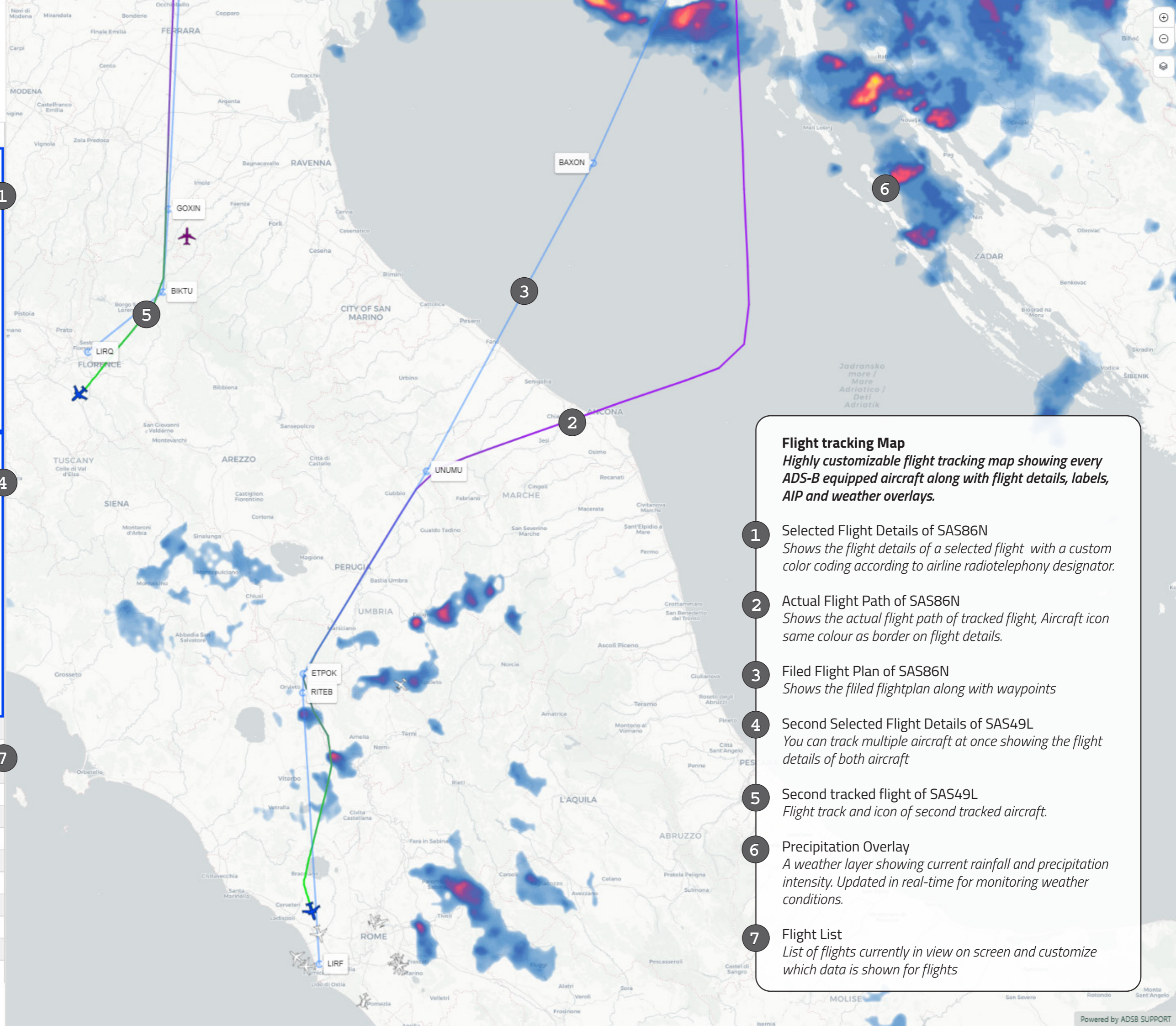
Show only selected flights

Current view flight count: 14

Dep.	Dest.	Callsign	SSR
SAS86N (45AC4F)			
4900ft. 229kts.			
Add to Selected Flights		Add Alert	
Dep	Arr	Altitude (ft)	
EKCH	LIRQ	4900	
Speed	V-Speed	Category	
229	-960	A3	
Rep. Track	Est. Track	SSR	
227	227	0744	
Position	Source		
Lat: 43.67205	ASN0109		
Lon: 11.16257	ADSB SUPPORT		
Last update			
09:00:32Z 08/05/2025			

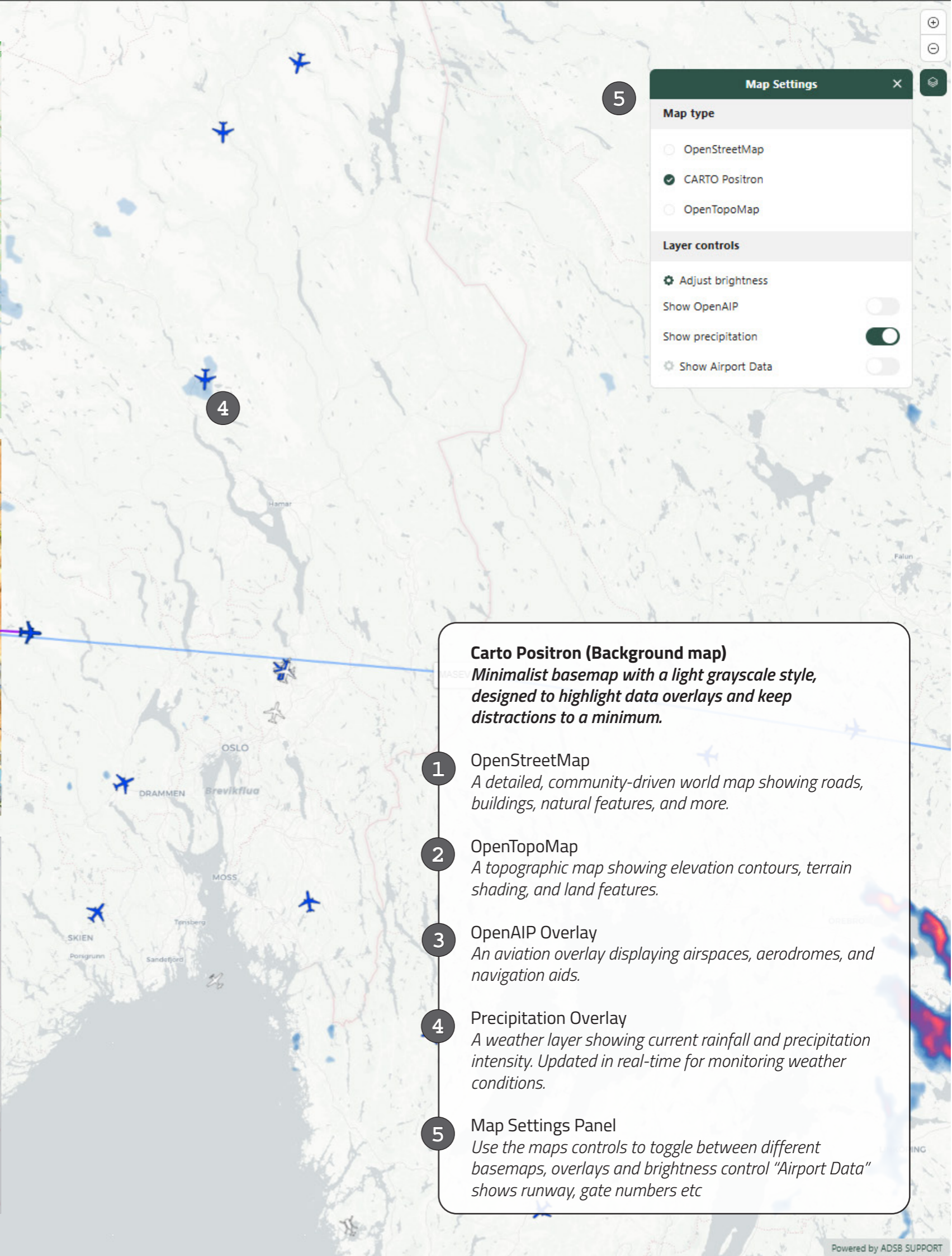
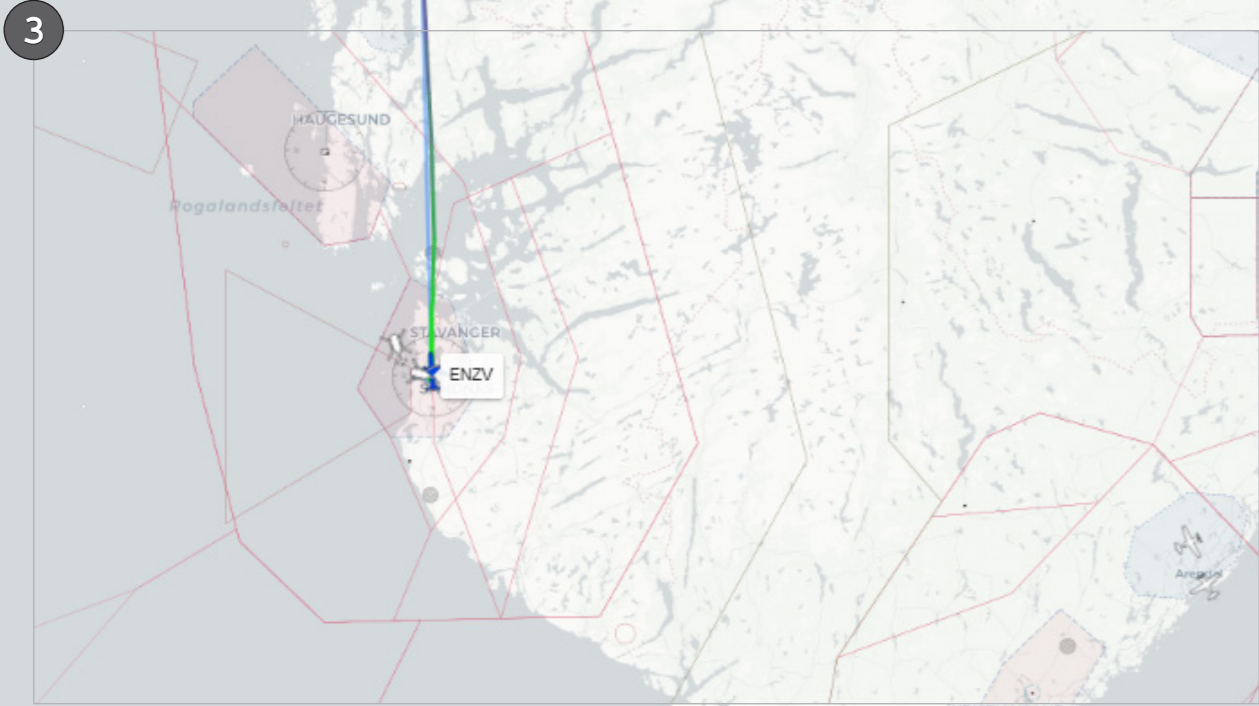
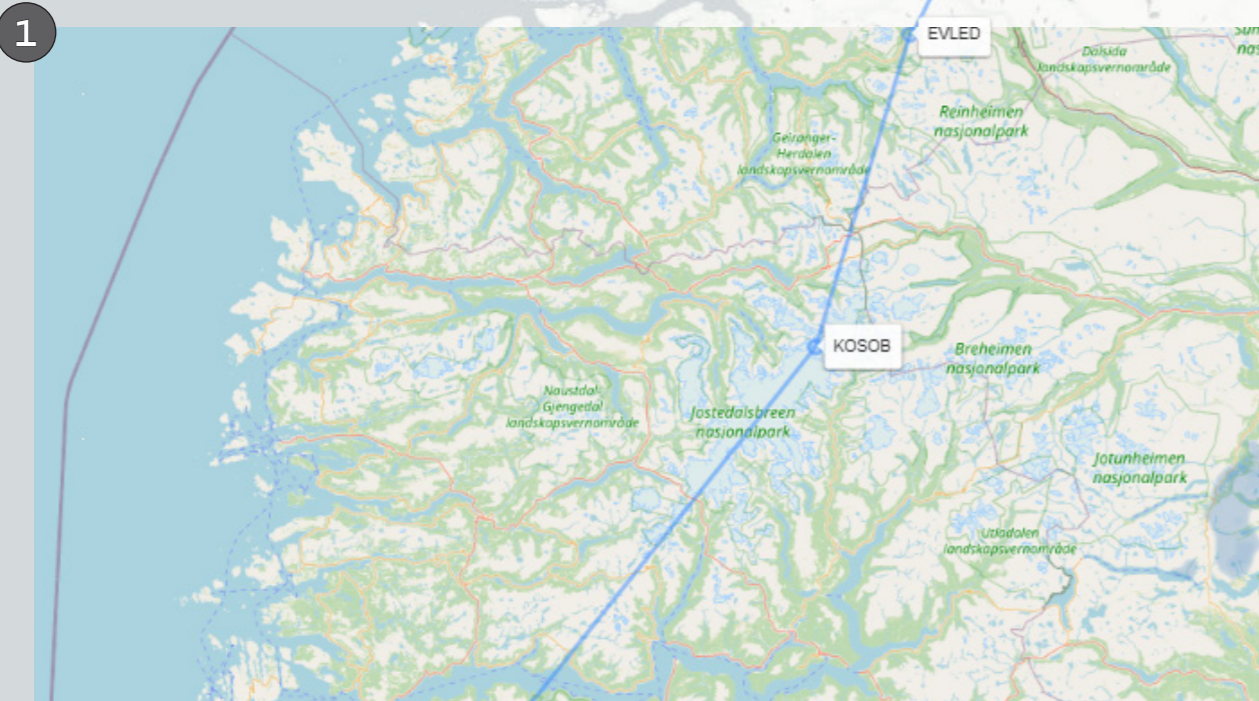
Dep.	Arr	Altitude (ft)	
SAS49L (47BA1D)			
2700ft. 192kts.			
Add to Selected Flights		Add Alert	
Dep	Arr	Altitude (ft)	
EKCH	LIRF	2700	
Speed	V-Speed	Category	
192	-320	A3	
Rep. Track	Est. Track	SSR	
162	162	6042	
Position	Source		
Lat: 41.97551	ASN0787		
Lon: 12.20712	ADSB SUPPORT		
Last update			
09:00:39Z 08/05/2025			

LIRF	EKCH	NSZ3731	0205	
-	-	POL112	2000	
-	-	OEDDJ	7000	
-	-	SLJ401	1000	
-	-	VJT750	7610	
-	-	T7KLI	1410	
LFPO	LIRF	WMT4DR	1000	
-	-	RYR77GM	1000	
LIRF	EDDL	EWG5YX	1000	
-	-	OEDDF	2000	
-	-	RYR5ML	4316	
-	-	LSA203	6470	



Flight tracking Map
 Highly customizable flight tracking map showing every ADS-B equipped aircraft along with flight details, labels, AIP and weather overlays.

- Selected Flight Details of SAS86N
Shows the flight details of a selected flight with a custom color coding according to airline radiotelephony designator.
- Actual Flight Path of SAS86N
Shows the actual flight path of tracked flight, Aircraft icon same colour as border on flight details.
- Filed Flight Plan of SAS86N
Shows the filed flightplan along with waypoints
- Second Selected Flight Details of SAS49L
You can track multiple aircraft at once showing the flight details of both aircraft
- Second tracked flight of SAS49L
Flight track and icon of second tracked aircraft.
- Precipitation Overlay
A weather layer showing current rainfall and precipitation intensity. Updated in real-time for monitoring weather conditions.
- Flight List
List of flights currently in view on screen and customize which data is shown for flights



Map Settings [X]

Map type

- OpenStreetMap
- CARTO Positron
- OpenTopoMap

Layer controls

- Adjust brightness
- Show OpenAIP
- Show precipitation
- Show Airport Data

Carto Positron (Background map)
Minimalist basemap with a light grayscale style, designed to highlight data overlays and keep distractions to a minimum.

- 1** OpenStreetMap
A detailed, community-driven world map showing roads, buildings, natural features, and more.
- 2** OpenTopoMap
A topographic map showing elevation contours, terrain shading, and land features.
- 3** OpenAIP Overlay
An aviation overlay displaying airspaces, aerodromes, and navigation aids.
- 4** Precipitation Overlay
A weather layer showing current rainfall and precipitation intensity. Updated in real-time for monitoring weather conditions.
- 5** Map Settings Panel
Use the maps controls to toggle between different basemaps, overlays and brightness control "Airport Data" shows runway, gate numbers etc

Settings

Selected Flights

Manage selected flights

Aircraft Trail

Show aircraft trail

120 minutes of trail (1-120)

Only show for current callsign

Aircraft Route

Show aircraft route

Show route waypoints

Aircraft Ground Data

Show aircraft ground data

Current map zoom level: 11

1 ground zoom level (1-18)

Aircraft Labels (select max 3)

Show aircraft labels

Callsign

Hex

Altitude

Groundspeed

Vertical rate

Track

Squawk code/SSR

Altitude Filter

Current map zoom level: 11

Show only aircraft above

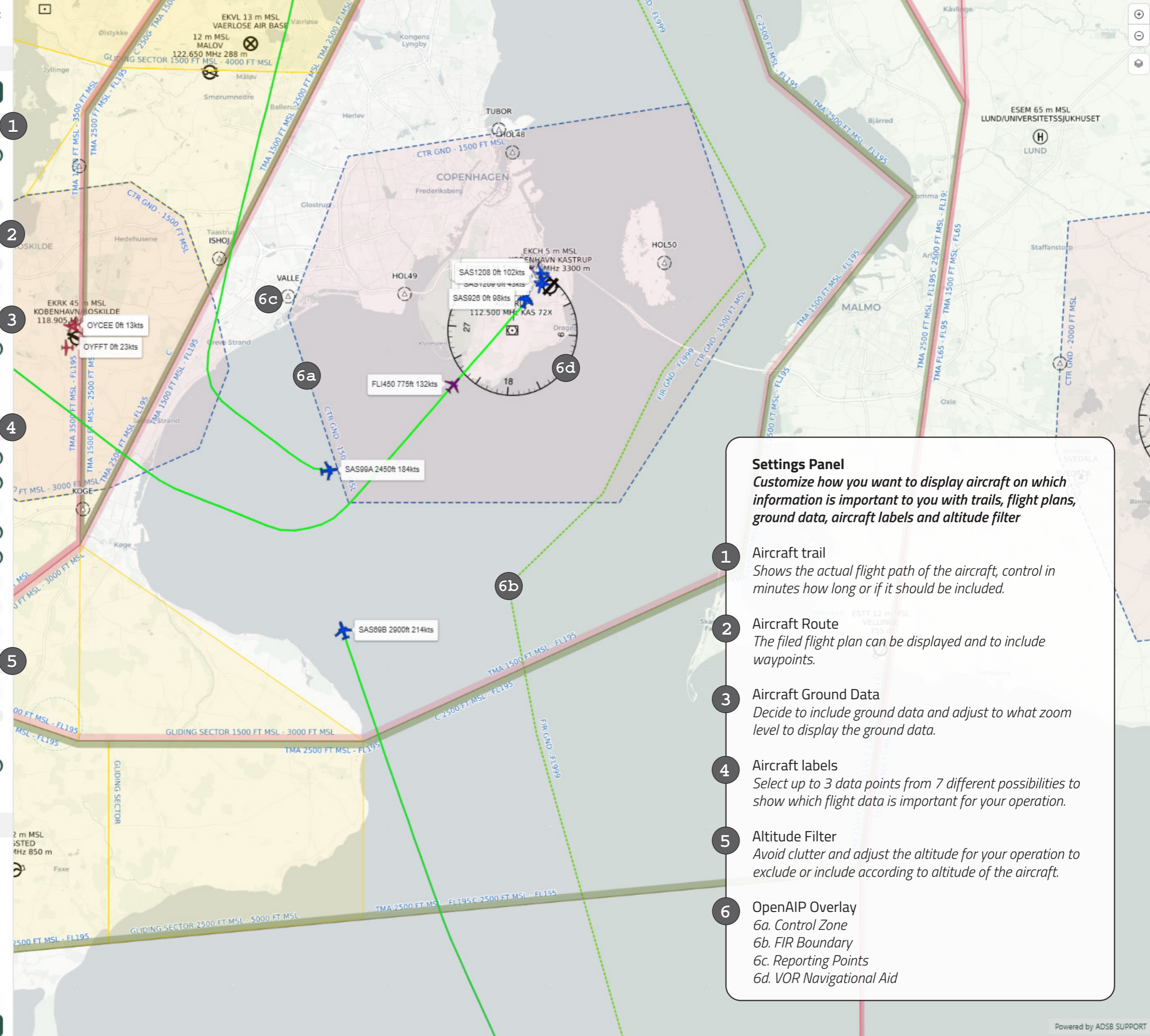
Zoom level 1-5 show only aircraft above 35000 FT

Show only aircraft below

Do not show aircraft above 5000 FT

Reset Settings

Reset all settings



Settings Panel

Customize how you want to display aircraft on which information is important to you with trails, flight plans, ground data, aircraft labels and altitude filter

- Aircraft trail**
Shows the actual flight path of the aircraft, control in minutes how long or if it should be included.
- Aircraft Route**
The filed flight plan can be displayed and to include waypoints.
- Aircraft Ground Data**
Decide to include ground data and adjust to what zoom level to display the ground data.
- Aircraft labels**
Select up to 3 data points from 7 different possibilities to show which flight data is important for your operation.
- Altitude Filter**
Avoid clutter and adjust the altitude for your operation to exclude or include according to altitude of the aircraft.
- OpenAIP Overlay**
6a. Control Zone
6b. FIR Boundary
6c. Reporting Points
6d. VOR Navigational Aid



Flightlist

Search for flights

Show selected flights

Show only selected flights

Current view flight count: 17

Callsign Dep. Dest. SSR

SAS61A (4CAC9F)

Oft. 99kts.

Add to Selected Flights

Add Alert

Dep EKCH Arr ESSA Altitude (ft) 0

Speed 99 V-Speed -2752 Category A3

Rep. Track 220 Est. Track 229 SSR 1272

Position Source Distance (NM)
Lat: 55.61061 ASN0162 1
Lon: 12.63859 ADSB SUPPORT

Last update
10:54:07Z 13/05/2025

SAS33D (4CACB4)

Oft. 104kts.

Add to Selected Flights

Add Alert

Dep LEPA Arr EKCH Altitude (ft) 0

Speed 104 V-Speed -192 Category A3

Rep. Track 41 Est. Track 281 SSR 5534

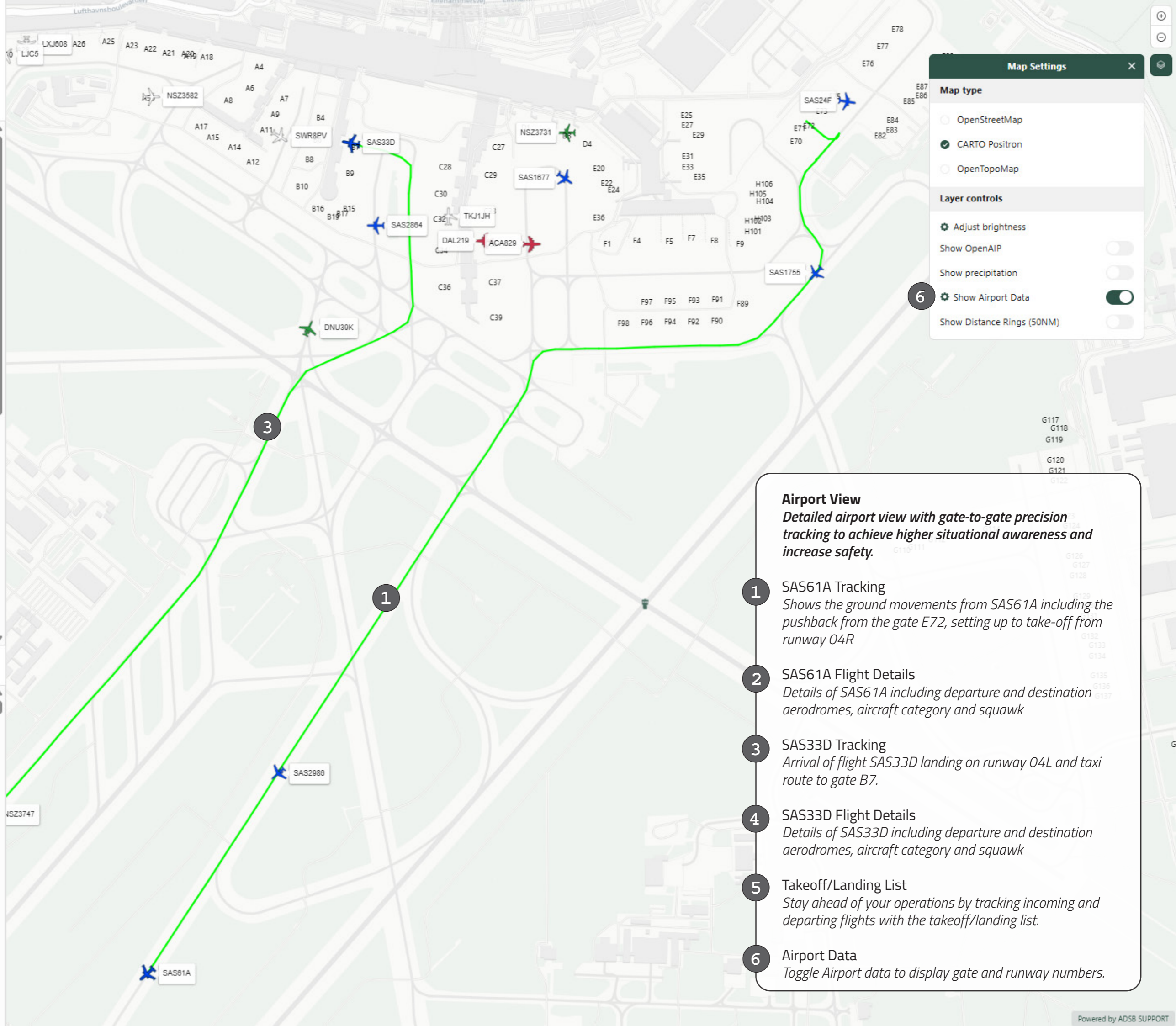
Position Source Distance (NM)

Takeoff/Landing List

Callsign Type Estimated Actual

13/05/2025

AUA3CP	Landing	18:54	-
SAS1260	Landing	18:51	-
NSZ2BH	Landing	18:49	-
NSZ3646	Takeoff	18:40	-
FLI459	Takeoff	18:35	-
DLH6RL	Landing	18:32	-
NOZ948	Landing	18:18	-
NSZ3093	Landing	18:18	-
SWR468E	Landing	18:18	-
AFR97RK	Landing	18:17	-
DNU48R	Takeoff	18:15	-
SAS1635	Takeoff	18:15	-
NSZ3303	Landing	18:13	-



Map Settings

Map type

- OpenStreetMap
- CARTO Positron
- OpenTopoMap

Layer controls

- Adjust brightness
- Show OpenAIP
- Show precipitation
- Show Airport Data
- Show Distance Rings (50NM)

Airport View

Detailed airport view with gate-to-gate precision tracking to achieve higher situational awareness and increase safety.

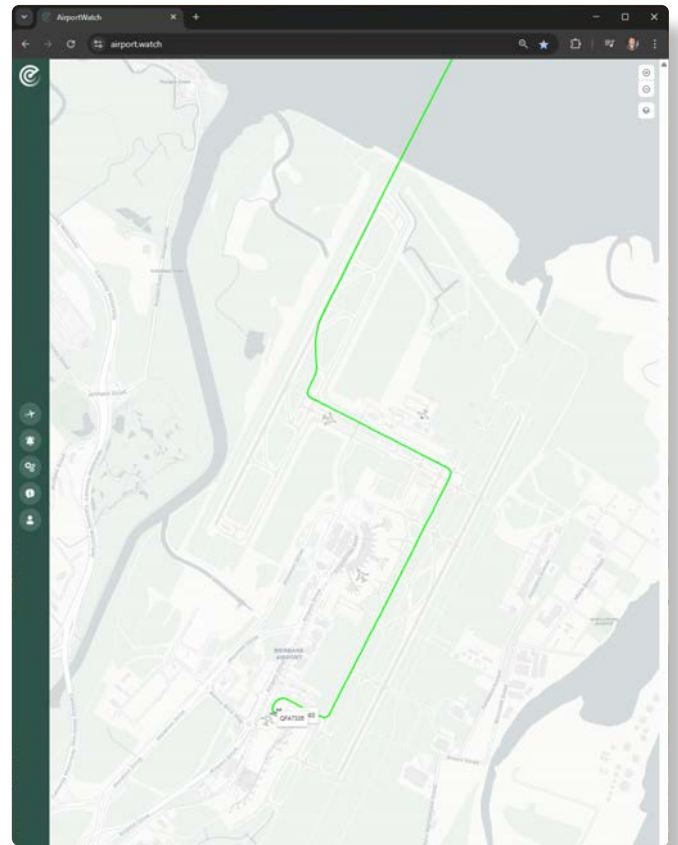
- SAS61A Tracking**
Shows the ground movements from SAS61A including the pushback from the gate E72, setting up to take-off from runway 04R
- SAS61A Flight Details**
Details of SAS61A including departure and destination aerodromes, aircraft category and squawk
- SAS33D Tracking**
Arrival of flight SAS33D landing on runway 04L and taxi route to gate B7.
- SAS33D Flight Details**
Details of SAS33D including departure and destination aerodromes, aircraft category and squawk
- Takeoff/Landing List**
Stay ahead of your operations by tracking incoming and departing flights with the takeoff/landing list.
- Airport Data**
Toggle Airport data to display gate and runway numbers.

Improve coverage at your airport.

Get the best ground / gate-to-gate coverage at your airport by becoming an ADS-B ground station host.

We provide the equipment for free. You just need to supply power and internet.

Contact us today to find out about becoming a host.



Who is ADSB SUPPORT?

Based in Denmark, ADSB SUPPORT is dedicated to improving aviation safety through our professional, secure, and low-latency ADS-B network. With decades of experience, we provide accurate and reliable aircraft positioning data by leveraging our own rapidly-growing global network of ADS-B ground stations, located world-wide.

ADSB SUPPORT complies with ISO 27001, NIS2 and GDPR Standards



ADSB SUPPORT A/S

Nimbusvej 9, 7190 Billund, Denmark - adsbsupport.com - adsb@adsbsupport.com +45 76 500 300